

# BML

## Socketless cast iron waste water system for bridge construction

Product information



# BML

Socketless cast iron  
waste water system for  
bridge construction

## BML product information

### **Tried and tested over the years**

The BML cast iron waste water system consists of more than 70 components and is designed specifically for use in bridge construction. It has proven its worth over the years and today is widely used as a drainage system for road and railway bridges.

### **Tough criteria**

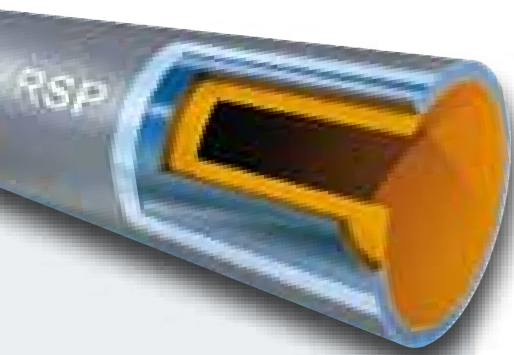
Drainage systems for bridges in Germany must meet Deutsche Bahn's rigorous and extremely detailed TL/TP specifications (sheet 87), and RSP®'s BML system complies with these fully.

### **Sturdiness**

Cast iron used in conjunction with specially-formulated coatings is the ideal material for meeting the specialised demands of bridge construction, as mechanical stability and corrosion resistance are fundamental requirements in this area. The galvanised surface of

BML pipes and fittings provides no point of attack for the ever more aggressive conditions encountered on railways and roads. The comprehensive range of fittings available for this socketless system allows bridge construction projects to be executed cost-effectively according to your exact specifications.

## Coatings and installation



### Coatings

BML cast iron fittings have high-quality priming and finishing coats that fully satisfy the German Federal Road Research Institute's ZTV-ING requirements (Part 4: Steel Construction, Table A 4.3.2, Component No. 3.3.3).

BML cast iron pipes are galvanised (40 µm) externally and feature a final epoxy resin coating (Deutsche Bahn colour code: DB 702). Their internal coating likewise consists of an epoxy paint.

This coating not only complies with DIN EN 877, but also meets Deutsche Bahn specifications. Even in today's age of ever more aggressive waste waters, these systems are guaranteed to deliver outstanding service life.

### Coating thicknesses

#### Fittings:

Internal and external: priming coat (70 µm) and finishing coat (80 µm) as per ZTV-ING

#### Pipes:

Internal 120-130 µm (epoxy resin)  
External 40 µm (zinc) and 80 µm (epoxy resin)

### Installation

BML cast iron pipes are supplied in a length of 3000 mm. They can be easily cut to size on the construction site using an electric pipe saw (e.g. Rothenberger Pipecut) or – under certain circumstances – an angle grinder.

Please ensure the cut is precise and square to guarantee reliable, non-leaky joints between pipes and fittings.

An edge seal coating should be applied to all cut edges to prevent infiltration and corrosion. RSP® products are compatible with all components covered by EN 877.

The installation method used generally depends on the circumstances at the place of installation. You can find more information on this topic in our "Technology and installation" catalogue – see page 11 for details of how to order it.

## Contents | Product overview

Design dimensions (DIN EN 877 and DIN 19522)	6
Pipe (3000 mm, 1000 mm)	6
Bend 15°	6
Bend 30°	6
Bend 45°	7
Bend 68°	7
Bend 88°	7
Plug	7
Branch 45°	8
Branch 88°	8
Short pipe with rectangular access door	9
Reducing pipe eccentric	9
Stack support pipe (no rubber)	10
Stack support bracket (with rubber)	10

All parts from our SML range are available as BML parts on request.

### Design dimensions (DIN EN 877 and DIN 19522)

Nominal size	Outside diameter		Wall thickness				Insertion length (sealing zone)	Pipe weight (empty)	Surface area
			Pipe		Fitting				
DN*	DE*	Tolerance*	E*	Tolerance*	e*	Tolerance*	t*	Approx. kg/m	Per m
100	110	+2/-1	3.5	-0.5	4.2	-0.7	40	8.3	0.35
125	135	+2/-2	4.0	-0.5	4.7	-1.0	45	11.7	0.42
150	160	+2/-2	4.0	-0.5	5.3	-1.3	50	14.0	0.50
200	210	+2/-2	5.0	-1.0	6.0	-1.5	60	23.0	0.65
250	274	+2.5/-2.5	5.5	-1.0	7.0	-1.5	70	33.0	0.85
300	326	+2.5/-2.5	6.0	-1.0	8.0	-1.5	80	43.2	1.02
400	429	+2/-3	6.3	-1.3	8.1	-1.7	80	59.8	1.34

\*All dimensions in mm.

### Pipe

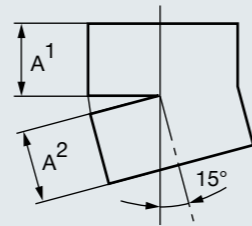
(Length = 3000 mm)

DN	kg	Item no.
100	25.0	BROHRDN100
125	35.0	BROHRDN125
150	42.0	BROHRDN150
200	69.0	BROHRDN200
250	99.0	BROHRDN250
300	130.0	BROHRDN300
400	182.0	BROHRDN400



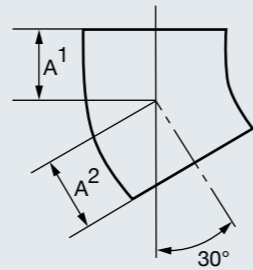
### Bend 15°

DN	A	kg	Item no.
100	50	1.0	B10015
125	60	1.7	B12515
150	65	2.5	B15015
200	80	4.6	B20015



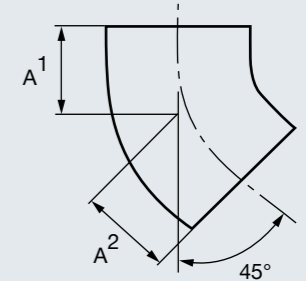
### Bend 30°

DN	A	kg	Item no.
100	60	1.3	B10030
125	70	2.0	B12530
150	80	3.0	B15030
200	95	5.4	B20030
250	110	9.7	B25030
300	130	15.5	B30030



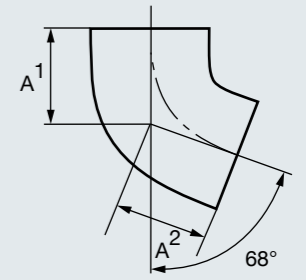
### Bend 45°

DN	A	kg	Item no.
100	70	1.6	B10045
125	80	2.3	B12545
150	90	3.5	B15045
200	110	6.2	B20045
250	130	10.3	B25045
300	155	17.3	B30045
400	247	36.0	B40045



### Bend 68°

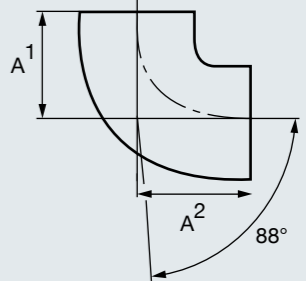
DN	A	kg	Item no.
100	90	1.9	B10070
125*	105	2.9	B12570
150	120	4.3	B15070
200	145	7.7	B20070



\* Discontinued.

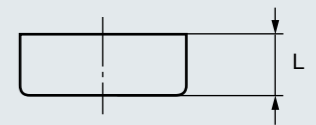
### Bend 88°

DN	A	kg	Item no.
100	110	2.1	B10088
125	125	3.2	B12588
150	145	4.9	B15088
200	180	8.8	B20088
250	220	13.8	B25088
300	260	28.3	B30088



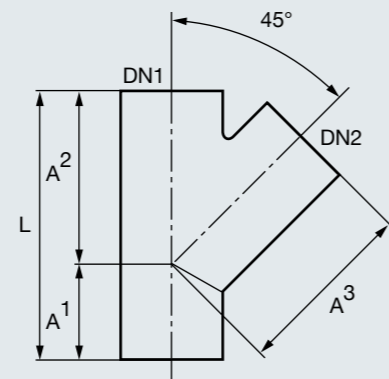
### Plug

DN	L	kg	Item no.
100	40	0.5	BENDDE100
125	45	1.1	BENDDE125
150	50	1.7	BENDDE150
200	60	3.1	BENDDE200
250	70	6.0	BENDDE250
300	80	9.5	BENDDE300



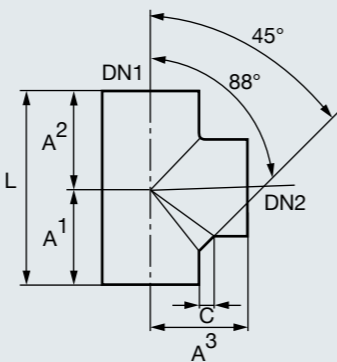
**Branch 45°**

DN1/DN2	A <sup>1</sup>	A <sup>2</sup>	A <sup>3</sup>	L	kg	Item no.
100/100	70	205	205	275	4.2	B10010045
125/100	60	220	220	280	5.2	B12510045
125/125	80	240	240	320	6.4	B12512545
150/100	55	240	240	295	6.8	B15010045
150/125	70	255	255	325	8.0	B15012545
150/150	90	265	265	355	9.2	B15015045
200/100	40	265	265	305	10.0	B20010045
200/125	55	280	280	335	11.9	B20012545
200/150	75	300	300	375	13.3	B20015045
200/200	115	340	340	455	17.2	B20020045
250/100	15	310	310	325	15.4	B25010045
250/125	35	335	335	370	17.9	B25012545
250/150	55	350	350	405	20.2	B25015045
250/200	90	385	385	475	25.1	B25020045
250/250	130	430	430	560	31.5	B25025045
300/100	5	345	345	350	22.0	B30010045
300/125	15	360	360	375	23.9	B30012545
300/150	35	380	380	415	26.9	B30015045
300/200	70	415	415	485	34.0	B30020045
300/250	115	465	465	580	42.1	B30025045
300/300	155	505	505	660	50.1	B30030045
400/300	105	555	555	660	60.0	B40030045



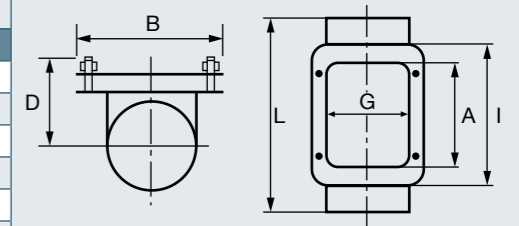
**Branch 88°**

DN1/DN2	A <sup>1</sup>	A <sup>2</sup>	A <sup>3</sup>	L	C	kg	Item no.
150/150	158	142	155	300	27.5	6.9	B15015088
200/100	144	126	175	270	32.5	8.9	B20010088
200/200	188	176	180	364	32.5	12.5	B20020088



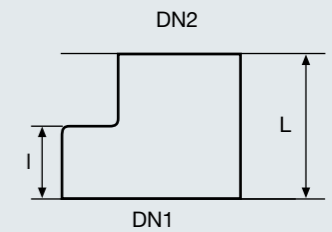
**Short pipe with rectangular access door**

DN	D	B	G	A	I	L	kg	Item no.
100	83	157	100	200	230	340	7.6	BREINIG100ECK
125	101	190	125	225	255	370	10.3	BREINIG125ECK
150	112	215	150	250	280	395	14.5	BREINIG150ECK
200	137	265	200	300	330	465	22.0	BREINIG200ECK
250	170	330	259	350	426	570	36.5	BREINIG250ECK
300	195	380	309	400	476	640	51.0	BREINIG300ECK



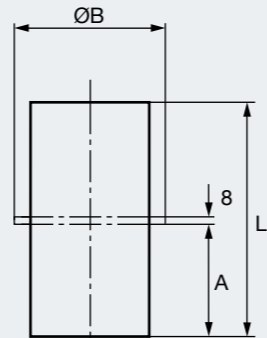
**Reducing pipe eccentric**

DN1/DN2	I	L	kg	Item no.
100/50	45	80	0.9	BÜBERG10050
100/70	45	85	0.9	BÜBERG10070
125/100	50	95	1.5	BÜBERG125100
150/100	60	105	2.2	BÜBERG150100
150/125	60	110	2.2	BÜBERG150125
200/100	70	115	4.1	BÜBERG200100
200/125	70	120	4.1	BÜBERG200125
200/150	65	125	4.3	BÜBERG200150
250/150	80	140	6.8	BÜBERG250150
250/200	80	145	7.0	BÜBERG250200
300/150	96	150	10.7	BÜBERG300150
300/200	95	160	11.4	BÜBERG300200
300/250	95	170	12.4	BÜBERG300250



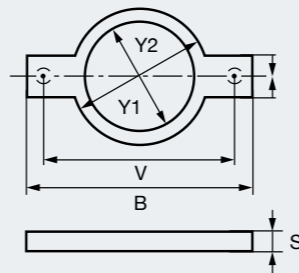
**Stack support pipe (no rubber)**

DN	B	A	L	kg	Item no.
100	145	96	200	2.3	BFALLROH100
125	170	96	200	3.0	BFALLROH125
150	195	96	200	4.0	BFALLROH150
200	245	96	200	6.0	BFALLROH200
250	340	146	300	18.7	BFALLROH250
300	390	146	300	24.0	BFALLROH300



**Stack support bracket (with rubber)**

DN	Y <sup>2</sup>	Y <sup>1</sup>	B	V	S	kg	Item no.
100	115	147	250	202	28	1.3	BAUFFALL100
125	138	171	275	225	28	1.5	BAUFFALL125
150	163	199	300	252	30	2.0	BAUFFALL150
200	215	250	360	310	30	3.0	BAUFFALL200
250	280	344	442	392	34	5.6	BAUFFALL250
300	332	393	495	445	39	7.4	BAUFFALL300



All parts from our SML range are available as BML parts on request.

**The full set of RSP® catalogues**

Cast iron waste water systems, couplings, and technology and installation

**Request a catalogue now!**  
+49 (0) 8034 70 82-0



**RSP®**  
Well connected



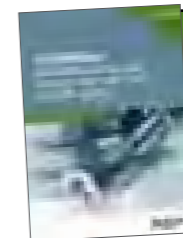
**SML**  
Socketless cast iron waste water system for building construction



**BML**  
Socketless cast iron waste water system for bridge construction



**KML**  
Socketless cast iron system for aggressive waste water from kitchens and laboratories



**Couplings**  
High tensile and standard joints for SML, KML, TML and BML systems



**TML**  
Socketless cast iron waste water system for civil engineering applications



**Technology and installation**  
What you need to know

Or download any catalogue from:  
[www.rsp-pipes.com](http://www.rsp-pipes.com)

RSP® Ruck Sanitärprodukte GmbH | Kirchstraße 1 | 83126 Flintsbach am Inn | Tel.: +49 (0) 8034 70 82-0

[www.rsp-pipes.com](http://www.rsp-pipes.com)